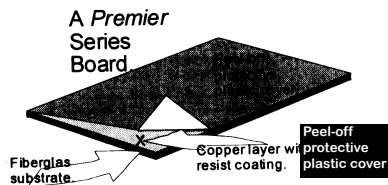


PROTO TYPE & PRINTED CIRCUIT BOARDS

PREMIER PRINTED CIRCUIT BOARDS POSITIVE ACTING, PRESENSITIZED PC BOARDS USING FR - 4 FIBERGLASS SUBSTRATE

These new sizes are in demand in many specialized applications. The thin 1/32" boards are light weight and fit edge connectors designed for that board thickness. And the 2oz. boards have exactly twice the standard thickness of copper; a requirement in applications where higher current will be used or when higher conductivity is imperative.

Like the standard series of 1/16" thickness, 1oz. Premier Printed Circuit boards, the new numbers may be exposed with any ordinary 100 watt lightbulb. Use with either Datak positive acting developer Nos. 12-402 or 12-404.



Board Size (Inches)	Copper Wt.	Copper Sides	Thickness	Premier Number
2 x 4	1 oz.	1	1/16"	14-024
3 x 4	1 oz.	1	1/16"	14-034
3 x 4	1 oz.	2	1/16"	14-234
3 x 6	1 oz.	1	1/16"	14-036
4 x 6	1 oz.	1	1/16"	14-046
4 x 6	1 oz.	1	1/32"	14-446
4 x 6	1 oz.	2	1/32"	14-546
6 x 6	1 oz.	1	1/16"	14-066
6 x 6	1 oz.	2	1/16"	14-266
6 x 9	1 oz.	1	1/16"	14-069
6 x 9	1 oz.	2	1/16"	14-269
6 x 9	1 oz.	1	1/32"	14-469
6 x 9	1 oz.	2	1/32"	14-569
6 x 12	2 oz.	1	1/16"	14-662
6 x 12	2 oz.	2	1/16"	14-762
7 x 10	1 oz.	1	1/16"	14-071
12 x 12	1 oz.	1	1/16"	14-112
12 x 12	1 oz.	2	1/16"	14-312

NOTE: For complete printed circuit board accessories see pages 268 - 275.

COPPER CLAD BOARDS

Standard copper clad boards are made of an FR4 substrate with 1 oz. (.0014") copper surface.

THIN COPPER CLAD BOARDS

Copper One Side:
(1/32" Thickness)

Size

No.PCB71

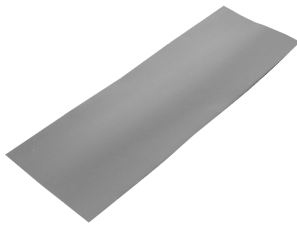
6" x 9"

Copper Both Side:
(1/32" Thickness)

Size

No.PCB79

6" x 9"



Copper One Side:
(1/16" Thickness)

No.PCB24

Size

2" x 4"

No.PCB35

Size

3" x 5"

No.PCB46

Size

4" x 6"

No. ER-11 PC two board set, one 5" x 6" and one 3" x 4.5"

No. PCB69

Size

6" x 9"

No. PCB810

Size

8" x 10"

No.PCB1212

Size

12" x 12"

Copper Both Sides:
(1/16" Thickness)

No.PCB266

Size

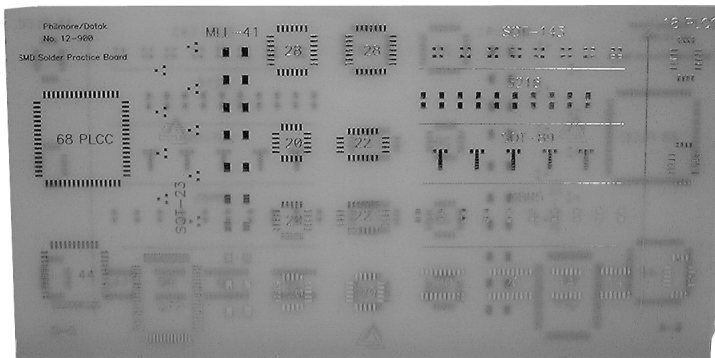
6" x 6"

No.PCB2810

Size

8" x 10"

SMD SOLDERING PRACTICE BOARD for training rework personnel



Training employees to remove/replace Surface Mount Components is expensive if you have to draw from good inventory. The Datak No. 12-900 practice board provides a range of component pads intended to be used by new employees until they are competent with your desoldering/soldering equipment. Components themselves are not supplied and it is suggested that you use defectives from your inventory or the lowest cost components available from surplus dealers or distributors.

Both sides of the PC board are identical and each side contains the following component footprints: One each PLCC 68 pin and 44 pin, one each 68 pin PQFP Bumper pack, eight SOT-23, two PLCC 28, four PLCC20, one PLCC24, three PLCC18, two SOIC20, two SOIC14 and an assortment of SOT-143, 3216, SOT-89 and 0805 patterns. Employees can learn the job well even if your exact patterns are not on this training board.